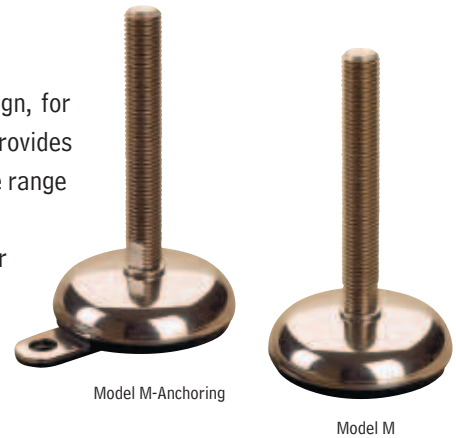


# HYGIENIC STAINLESS

## >>> Hygienic M-Series

The Sunnex Hygienic M-Series has a rounded and polished surface design, for applications requiring frequent cleaning and wash-downs. The 5° swivel provides excellent stability even on inclined surfaces. Models are available in a wide range of load capacities, bolt diameters and length configurations.

The Hygienic M-Series mounts are also available with thread casing for added cleanliness. Optional anchoring holes are available to provide easy fastening of equipment. In addition, integrated adjustment flats in the bolt allow full adjustment, without sacrificing height, even in a blind hole design.

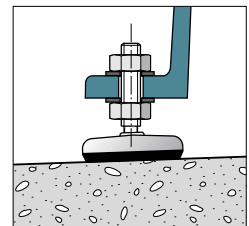


ADVANTAGES	APPLICATIONS
>> Rubber meets FDA standard 177.2600 for good grade requirements	>> AUTOMATED ASSEMBLY EQUIPMENT
>> Rubber permanently vulcanized to housing for hygienic seal	>> CONVEYORS
>> Wide temperature range; -20° to +100°C	>> MATERIAL HANDLING EQUIPMENT
>> 5° swivel for increased stability	>> VIBRATION FEEDERS
	>> PACKAGING FILLING MACHINES
	>> SHAKER BOWLS

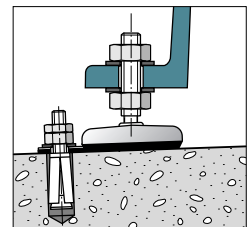
**EXAMPLE OF ORDER: M 75 12 100**

- Thread length
- Thread diameter
- Footbase
- Type

**Assembly example M-Series**



**Standard**



**Anchoring**

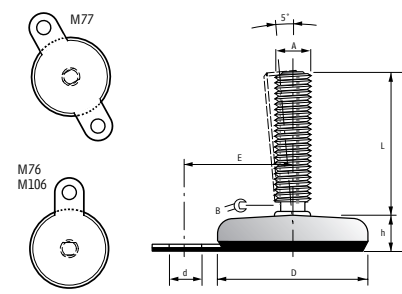
FOOTBASE STANDARD	M40	M50	M75	M105	M100	M125	M150	M180
Diameter D, mm	40	50	75	100	100	125	150	100
Height h, mm	20	21	22	32	32	37	40	40
Max load, daN (kg)	200	300	800	1000	2000	3000	4000	5000

THREADED BOLT	A	A	A	A	A	A	A	A
Length L, 100 mm	M10*	M12	M16	M20	M24	M30	M36	M42**
Length L, 150 mm	M10*	M12	M16	M20	M24	M30	M36	M42**

B mm	8	10	13	15	19	24	30	36
------	---	----	----	----	----	----	----	----

FOOTBASE ANCHORING	M76	M77	M106
Diameter D, mm	75	75	100
Height h, mm	22	22	32
Length E, mm	52	52	67
Hole diameter d, mm	15	15	15
Max load, daN (kg)	800	800	1000

**Dimensioned Drawing M-Series**



\*M10 thread only available for footbase M40, M50 and M75.  
 \*\* Threaded bolt M42 is not available for footbase M76, M77 and M106.