

LEVELING MOUNTS: STEEL

>>> LS/LP-Series, Swivel

The Sunnex metal LS and LP-Series of leveling mounts offer the highest load capacity for leveling-only applications. In addition, the mounts have a reduced height profile for limited visibility.

The LS-Series stainless steel model offers corrosion resistance, a smooth surface, and a high quality appearance.

The LP-Series cast zinc, powder coated model allows texture and color customization with corrosion resistance for most demanding environments.

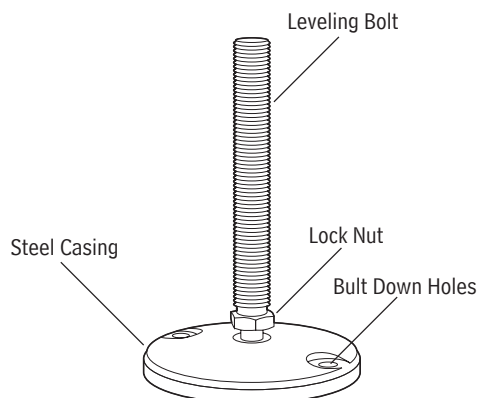


ADVANTAGES

- >> Fast, easy, and precise leveling of all types of machines and equipment
- >> Wide variety of configurations
- >> Self-aligning without sacrificing stability
- >> No cementing or bolting needed
- >> Flexible, non-scuff or scratch-resistant
- >> Cost-effective options
- >> +/-3 or /-20° range of motion available

APPLICATIONS

- >> INDUSTRIAL SCALES
- >> SMALL SCALE METAL MACHINES
- >> WOODWORKING MACHINES
- >> DISPLAYS
- >> CONVEYORS
- >> FRAME SYSTEMS
- >> WORKSTATIONS

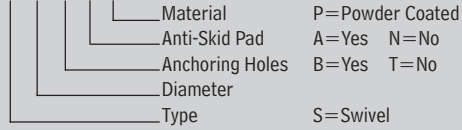


How to Select a Leveling Mount & Bolt

1. Select the base material
2. Select swivel configuration
3. Select diameter based on load requirements
4. Consider anti-skid and anchoring options
5. Match swivel bolt with base
6. Select bolt (material, thread and length)

LEVELING MOUNTS: STEEL

EXAMPLE OF ORDER: S 30 T A P



Swivel Base



Swivel Bolt



| SWIVEL FOOTBASE | S30 | S40 | S60 | S80 | S100 | S120 |
|--------------------|------|------|------|------|------|------|
| Diameter, mm | 30 | 40 | 60 | 80 | 100 | 120 |
| Height, mm | 28 | 28 | 28 | 28 | 28 | 28 |
| Length, mm | – | – | 40 | 55 | 74 | 94 |
| Hole diameter, mm | – | – | 9 | 9 | 9 | 9 |
| Max load, lbs | 3300 | 4500 | 5600 | 6800 | 7800 | 7800 |
| Max load, daN (kg) | 1400 | 2000 | 2500 | 3000 | 3500 | 3500 |

| SWIVEL THREADED BOLT | A | A | A | A | A | A | A |
|----------------------|--------|---------|--------|--------|--------|--------|-----|
| Length, 1.5 in | 1/4-20 | 5/16-18 | – | – | – | – | – |
| Length, 2.0 in | 1/4-20 | 5/16-18 | 3/8-16 | 1/2-13 | – | – | – |
| Length, 4.0 in | – | – | 3/8-16 | 1/2-13 | 5/8-11 | 3/4-10 | 1-8 |
| Length, 6.0 in | – | – | 3/8-16 | 1/2-13 | 5/8-11 | 3/4-10 | 1-8 |
| Length, 8.0 in | – | – | – | – | 5/8-11 | 3/4-10 | 1-8 |
| Length, 30 mm | M6 | – | – | – | – | – | – |
| Length, 40 mm | M6 | M8 | M10 | – | – | – | – |
| Length, 66 mm | – | – | – | M12 | – | – | – |
| Length, 80 mm | – | M8 | M10 | – | – | – | – |
| Length, 100 mm | – | – | – | M12 | M16 | M20 | M24 |
| Length, 150 mm | – | – | M10 | M12 | M16 | M20 | M24 |
| Length, 200 mm | – | – | – | – | – | M20 | M24 |

STANDARD: The LS/LP-Series does not include nut or washer.

STANDARD: See page 31 for the LS/LP-Series.